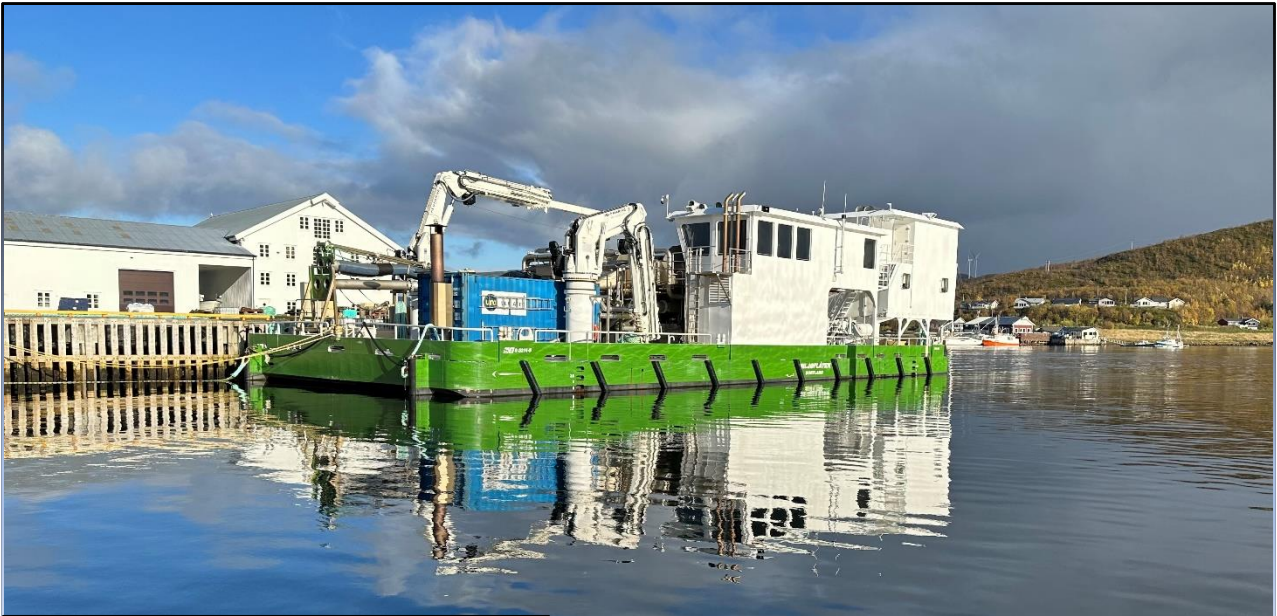


FFS ATON **Self propelled Work barge**



Response - Solutions - Quality

We respond, we seek solutions, we deliver quality.

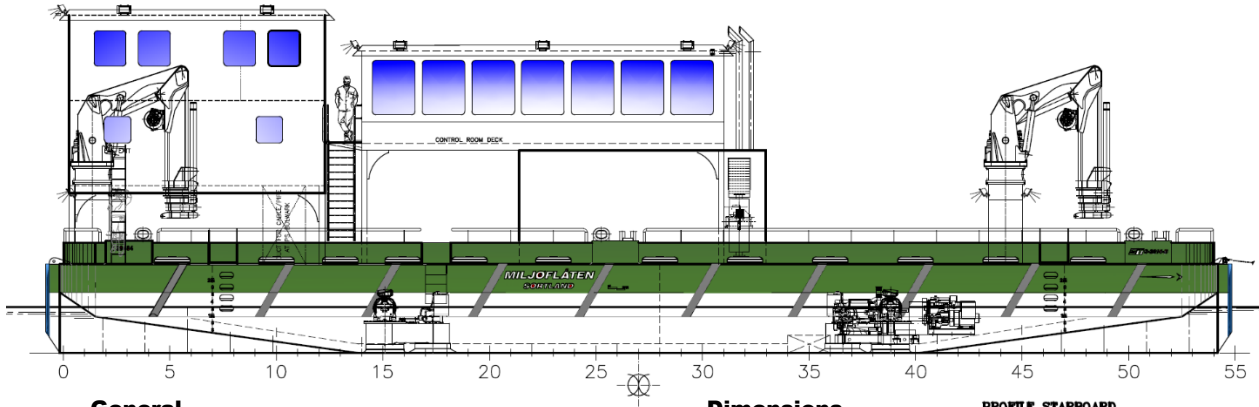
Towing - Mooring - Salvage

Specially designed and equipped for:

Cable laying - Construction work - Diving - Transport - Survey - Dredging - Drilling - Aqua

Self propelled crane and work barge

FFS ATON



General

Type of vessel	Crane vessel Self propelled
Trading area	Coastal trade
Year built	2016
Flag state	NOR
Port of registry	FARSUND
IMO Number	
Radio Call Sign	LG9484
MMSI	

Engines

2x Nogva Scania DI13 480 KVA	IMO Tier II
1x Nogva John Deer 90 KW	genset
Props.	2 x Pumpjet 150 KW

Capacities

Speed. Max/Eco	7/6 knots
Consumption	1,5 tonnes
Bollard Pull Cont	4 T
Endurance eco spd	60 days

Deck

Crane	4x 60Tm 1T @ 27m
Anchor winches	N/A
Tugger Winch	3,7 T
Mooring winches/Four point	5 x 5T Capstans
Deck Cargo	200T
Deck space	30x10,5 Meter
Moonpool	N/A
A-Frame	30T*
Spud leg	N/A
Salvage Pump	1500 m3/hr*
Aux Power supply	400V 500 Ah

Normally carrying a wide specter of salvage equipment
Such as electrical and diesel driven salvage pumps welding
and cutting equipment, etc.

Details subject to change without warning.

*Optional equipment

Dimensions

Length o.a	32,6m
Beam Extreme	14,0m
Depth to main deck	2,5m
Max Draught	2,0 m
Gross tonnage	354

PROFILE STARBOARD

Tank Capacities

Fuel/oil	71m ³
Fresh water	50m ³
Freshwater/ballast	188 m ³

Accommodation

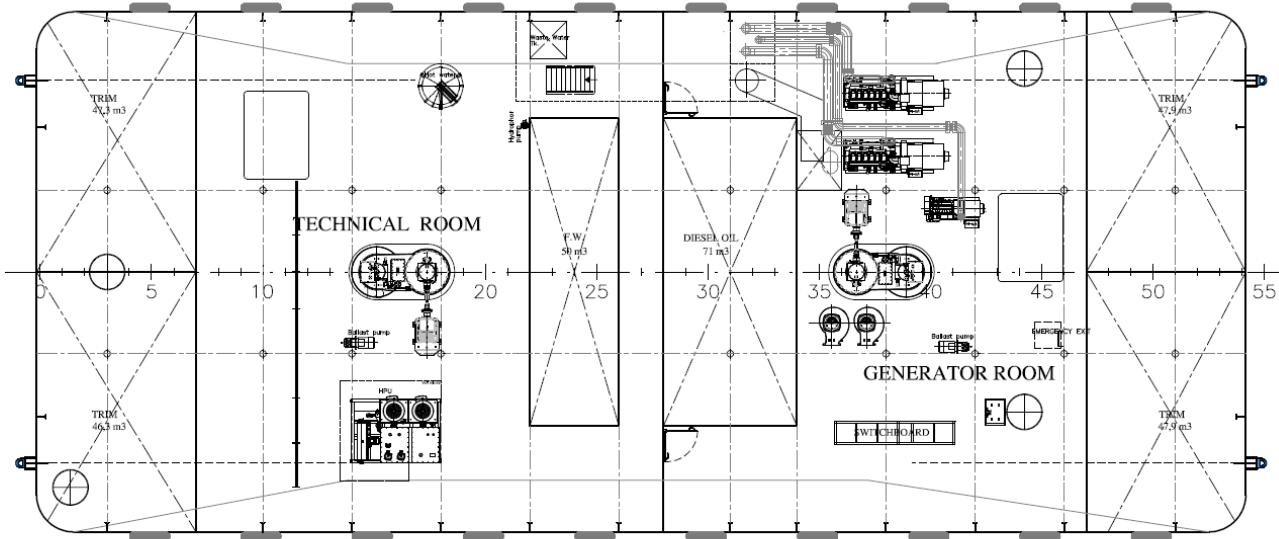
Removable.	
Cabins with toilet and shower	4x1
Large mess room and galley	
Workshop	40m ²

Other

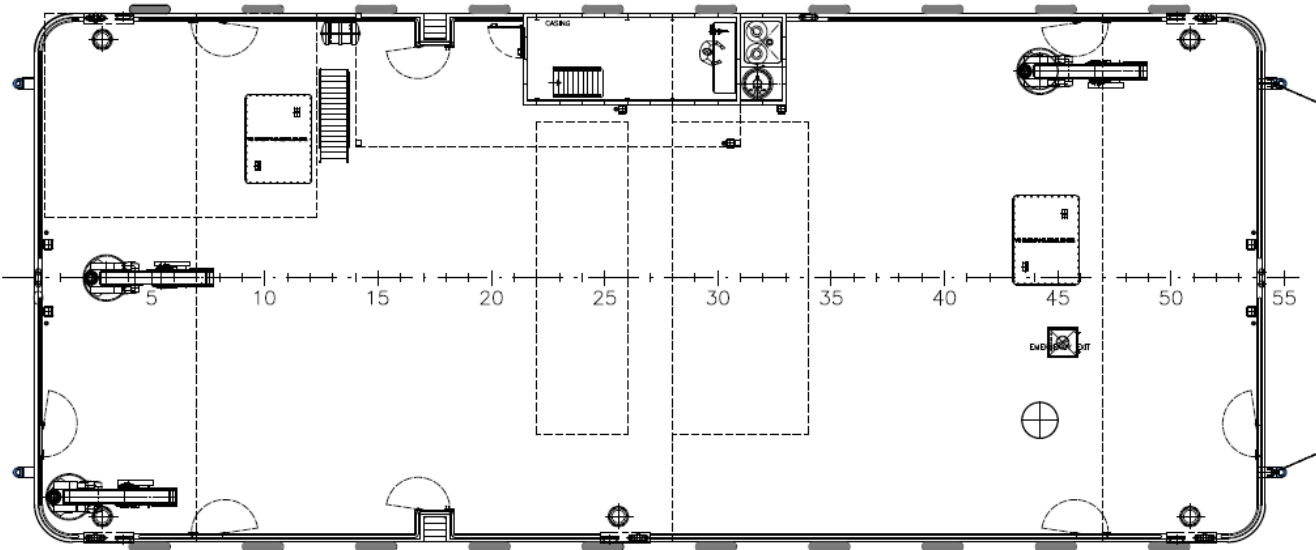
Workboats*
Yokohama fenders*

Bridge

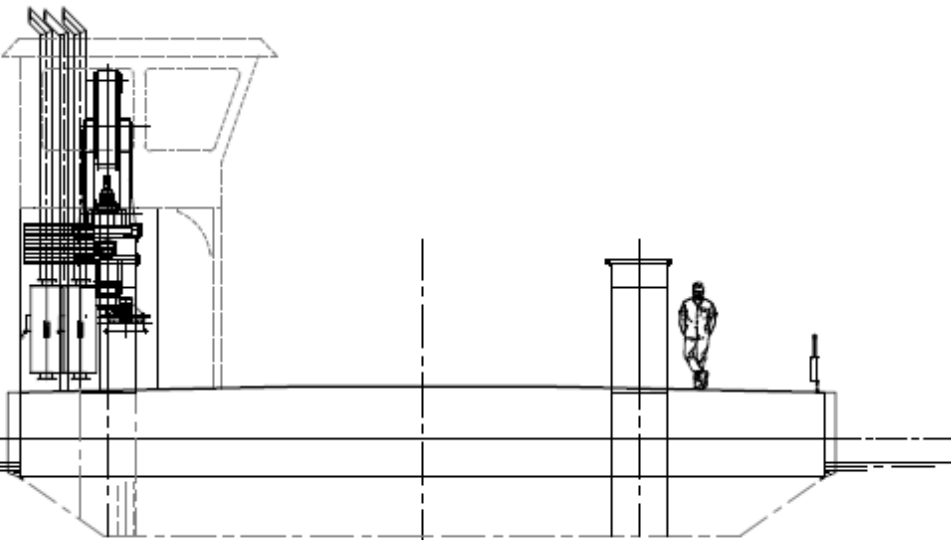
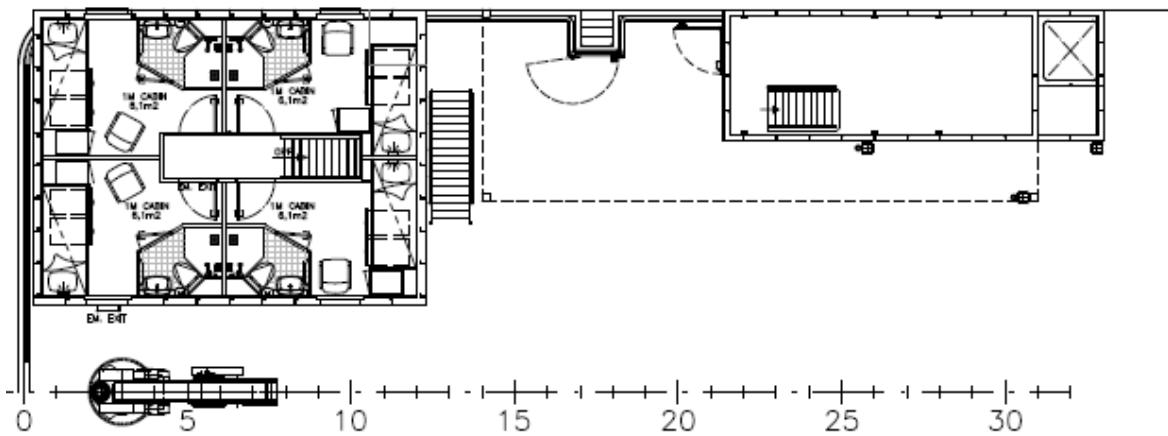
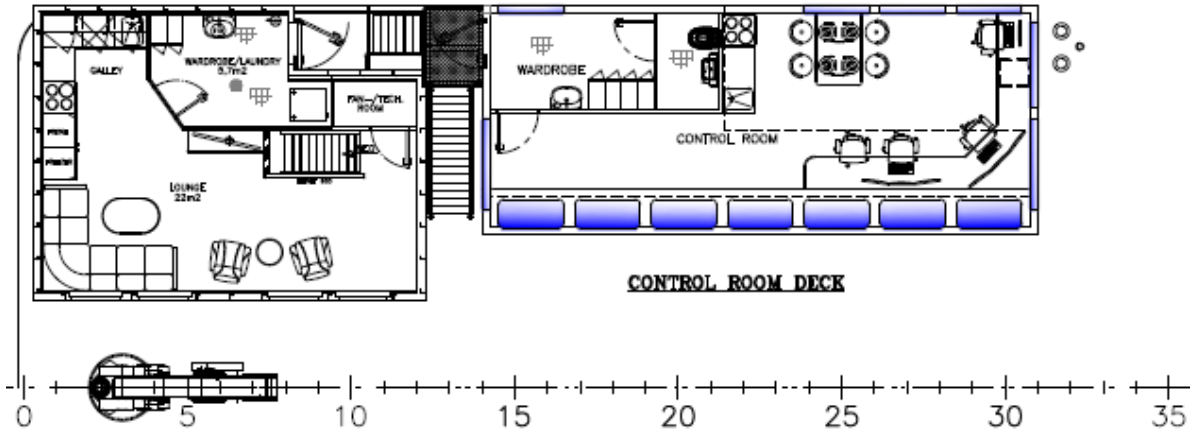
Communication equipment for A1
All modern navigation equipment according
to class



PLANE BELOW DECK



PLANE OF DECK



FRAME 31