

# FFS PONTON 10

# RoRo Barge/Link Span

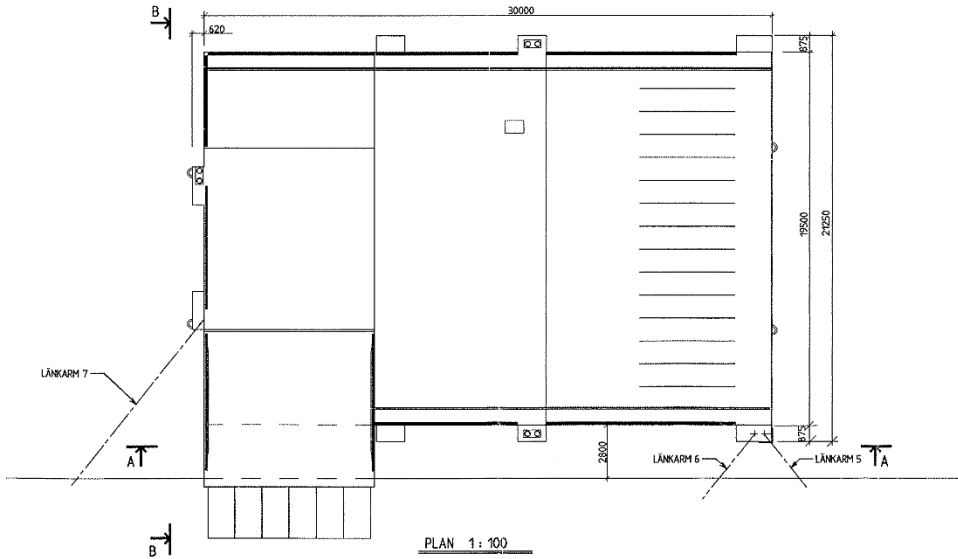


## Response - Solutions - Quality

We respond, we seek solutions, we deliver quality.

## Towing - Mooring - Salvage

# RoRo Barge Linkspan **FFS PONTON 10**



### General

Type of vessel	LinkSpan RoRo Barge
Trading area	A1
Year built	1982
Passengers	N/A
Flag state	NOR
IMO Number	N/A
Radio Call Sign	N/A
MMSI	N/A

### Dimensions

Length	30,53m
Beam	21,11m incl- fenders
Depth	3,5m
Max Draught	1,4 m
Gross tonnage	605

### Ballast Tank Capabilities

Total approx. 1100 m3 in 8 tanks

### Capacities

Forklift axle load	60T
Trailer Axle load	21T
Ramp.	Length 9,17m Beam 8,91m

### Accommodation

N/A

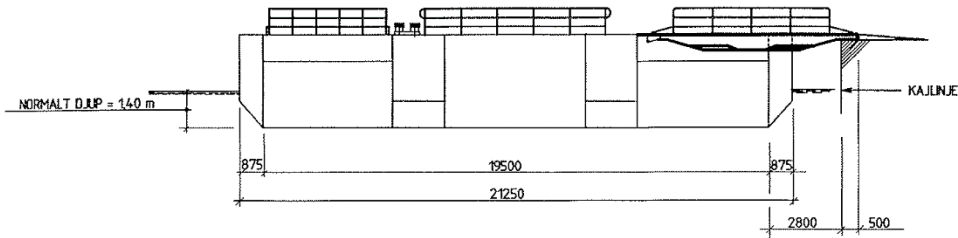
### FIFI

N/A

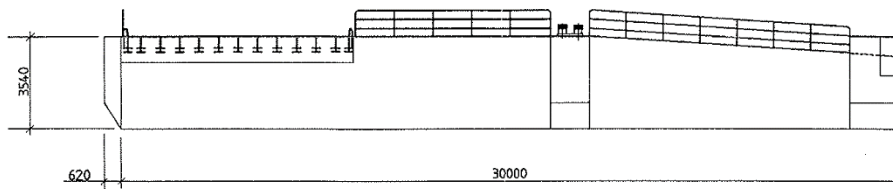
### Bridge

N/A

Can be equipped with Mobile crane, and used for construction works, or with accommodation units and use as temporarily accommodation barge.



VY B-B 1:100



VY A-A 1:100

