

FFS ARION

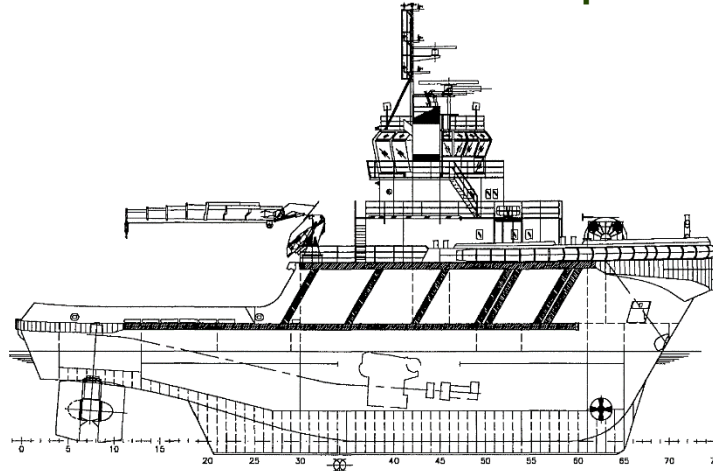
AHT ASD ESCORT and Deepsea salvage Tug.



Response – Solutions – Quality

We respond, we seek solutions, we deliver quality.

Towing – Mooring – Salvage



DNV Class Notation + 1A1 Escort(N(99,-10),(78,8)) FiFi(I) Tug E0 OILREC SF

General

Type of vessel	TUG Deep sea/Salvage
Trading area	Unrestricted
Year built	1993
Flag state	Cyp
Port of registry	Limassol
IMO Number	9056789
Radio Call Sign	5BQL4
MMSI	

Engines

2x Wartsila Wickman	8V28B, Low NOx
2647 KW Each	
Props.	Azimuth US 120/85-320 Pitch propellers
Bow Thruster	Brunvoll 600 HP

Capacities

Speed. Max/Eco	14/9 knots
Consumption	20/9
Bollard Pull Cont	87 T
Steering power @ 10kn	100T
Endurance eco spd	70 days
Clear deck space	150 m ²

Deck

Crane Palfinger PK 7500 M	4,2 T @ 14,2m
Oilboom	300 m
Aft Winch double Drum	300T Br 175T Pull
Drum 1 Towing Drum	1000 m 64 mm
Drum 2 AH Drum	1000 m 64mm
Bow Winch double drum	300T Br130T Pull
Storage drum	3m ø2,2
Tugger Winch	15 T
Stern Roller	200T 3,5x1,5 m
Fork	300T Karmoy Max 102mm
Towing Pins	160T Karmoy

Dimensions

Length o.a	45,5m
Beam Extreme	14,6m
Depth to main deck	7,6m
Max Draught	7,0 m
Air draft	24,0m
Gross tonnage	1229
Deck Area	180m ²

Tank Capacities

Fuel	800 m ³
Fresh water	52m ³
Oil Recovery	500 m ³

Accommodation

Fully airconditioned	
Single cabins	4 for 4 crew
Double cabins	6 for 12 crew
Ship office	1
Total beds	16
Garage for ROV and ORO equipment	

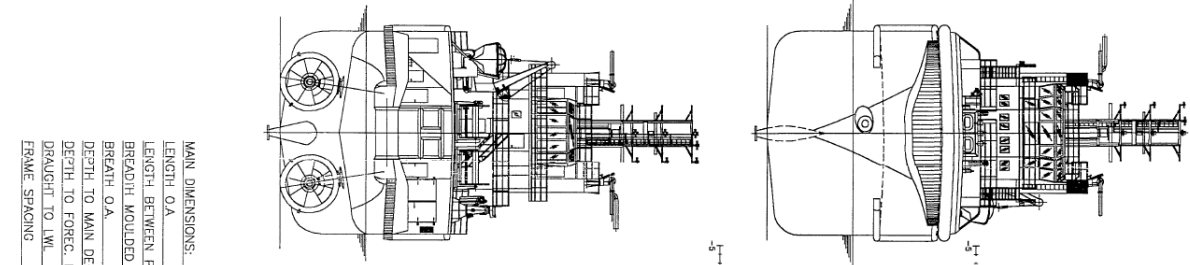
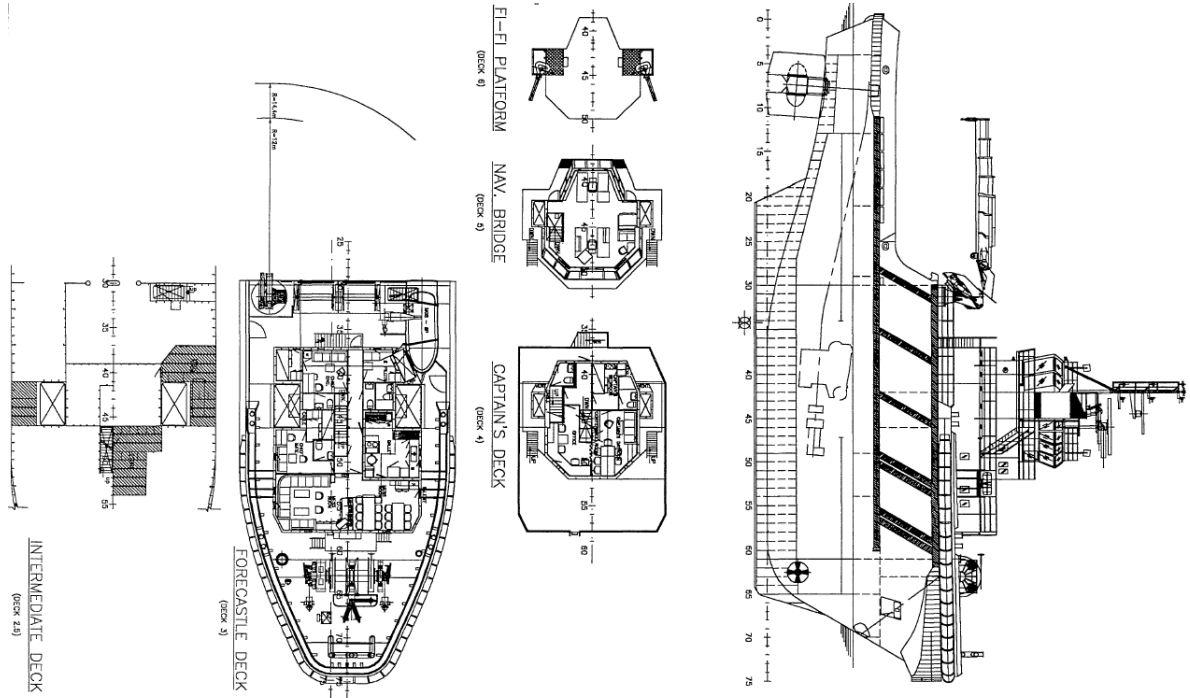
Other

FiFi 1, Waterspray and foam
Workboat
Yokohama fenders*
Salvage Pumps*

Bridge

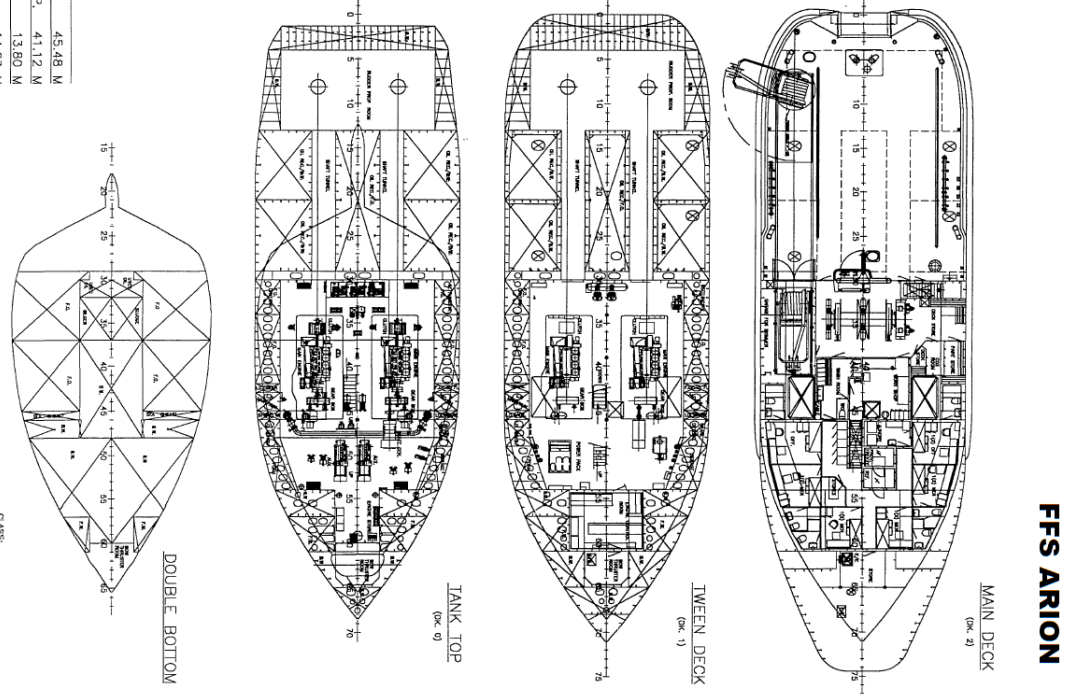
Communication equipment for A1+A2+A3
All modern navigation equipment according to class

*Normally carrying a wide specter of salvage equipment such as electrical and diesel driven salvage pumps welding and cutting equipment, yokohama fenders, etc. Salvage equipment is FFS pool equipment.
Details subject to change without warning.



MAIN DIMENSIONS:

LENGTH O.A.	45.48 M
LENGTH BETWEEN P.P.	41.12 M
BREADTH MOLDED	13.80 M
BREADTH O.A.	14.63 M
DEPTH TO MAIN DECK	7.60 M
DEPTH TO FOREC. DECK	11.50 M
DRAUGHT TO LWL	5.80 M
FRAME SPACING	600 MM



FFS ARION

FFS MARINE AS
 Postal: P.B 126, NO-4552 Farsund NORWAY
 www.ffa-as.com
 Office ph.: +47 38 39 12 29
 Mail: mail@ffa-as.com - chartering@ffa-as.com
 Visit: Strandgaten 10, Farsund, Norway Org.no NO 921 576 846



12.11.2021