

FFS Workboats 1-2-3-4-5

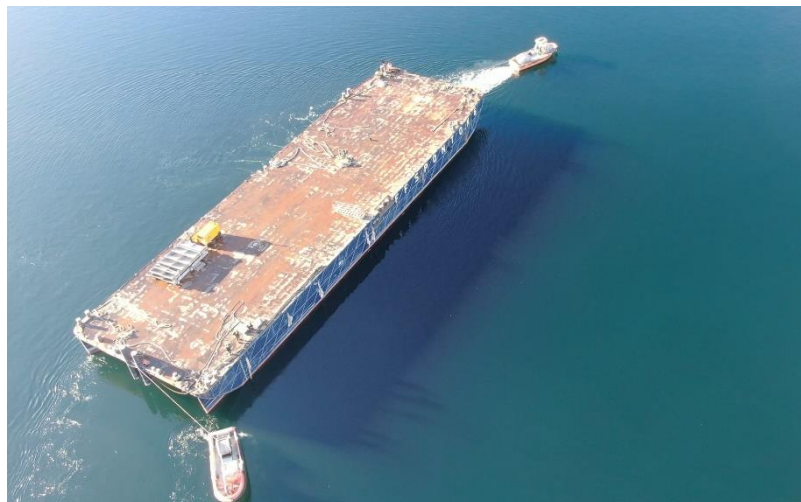


Response – Solutions – Quality

We respond, we seek solutions, we deliver quality.

Towing – Mooring – Salvage

FFS Workboat 25 ft



General

Type of vessel Jemar Norpower 25ft
 Trading area A1 Inshore
 Year built 2005 - 2008
 Flag state NOR
 Port of registry FARSUND
 IMO Number N/A

MMSI N/A

Engines

1 X Cummins 5,9 litre 180 BHK
 1 X AGF-1131 red 1:3 gear and VPP 800mm
 Bow Thruster 50 kg thrust

Capacities

Speed. Max/Eco 12/9 knots
 Consumption 20 l hr
 Bollard Pull Cont 2T
 Endurance eco spd 1 days

Deck

Streamer winch 1,5 t
 Bow winch spectron 1,5 t
 Henriksen hook 8t

Dimensions

Length o.a 7,82 m
 Beam Extreme 2,93m
 Draft normal operation 1,2 m
 Max Draught 1,5 m
 Weight unloaded 4,4t

Tank Capacities

Fuel/oil 0,7m³

Accommodation

Daytime operation.

Other

Bridge

Communication equipment for A1
 All modern navigation equipment according to class

Normally carrying a wide specter of salvage equipment
 Such as electrical and diesel driven salvage pumps welding
 and cutting equipment, etc.
 Details subject to change without warning.