

# FFS PONTON 6

## PRINCIPAL DIMENSIONS:

|                 |         |
|-----------------|---------|
| Length over all | 55,25 m |
| Length pp       | 52,59 m |
| Beam over all   | 17,30 m |
| Depth moulded   | 4,00 m  |
| Ligth draft     | 0,75 m  |
| Loaded draft    | 3,25 m  |

|         |                         |
|---------|-------------------------|
| Class   | G. L. + 100 A5 deep sea |
| Tonnage | 921 GT / 276 NT         |
| Built   | 2000                    |

## ARRANGEMENT & FORM:

|           |                                     |
|-----------|-------------------------------------|
| Bow       | Raked, RoRo conection               |
| Stern     | Raked with 2 skegs, 2 pushpipes aft |
| Bulkheads | 3 longitudinal, 4 transverse        |

In total 20 compartments of which 19 can be used for ballast water.  
Each compartment with 2 covers, deckplug & sounding pipe.

Removable railing around.  
Removable signal mast and anchor winch.  
Side & stern lights : Solar

## CAPACITIES:

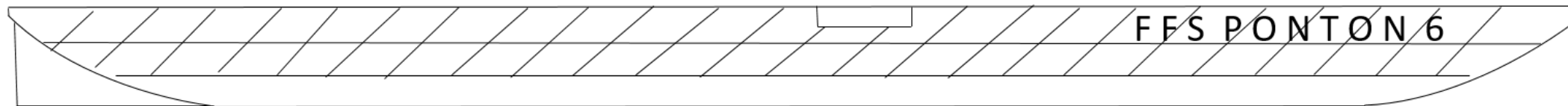
|             |  |
|-------------|--|
| Deadweight  | 2286 tonnes  |
| Deckload    | 10 to/ m <sup>2</sup>  |
| Wheel load  | 12 to at 10 bar  |
| Point loads | 60 to at webframes<br>80 to at bulkheads<br>200 to at bulkhead cross |

## Optional:

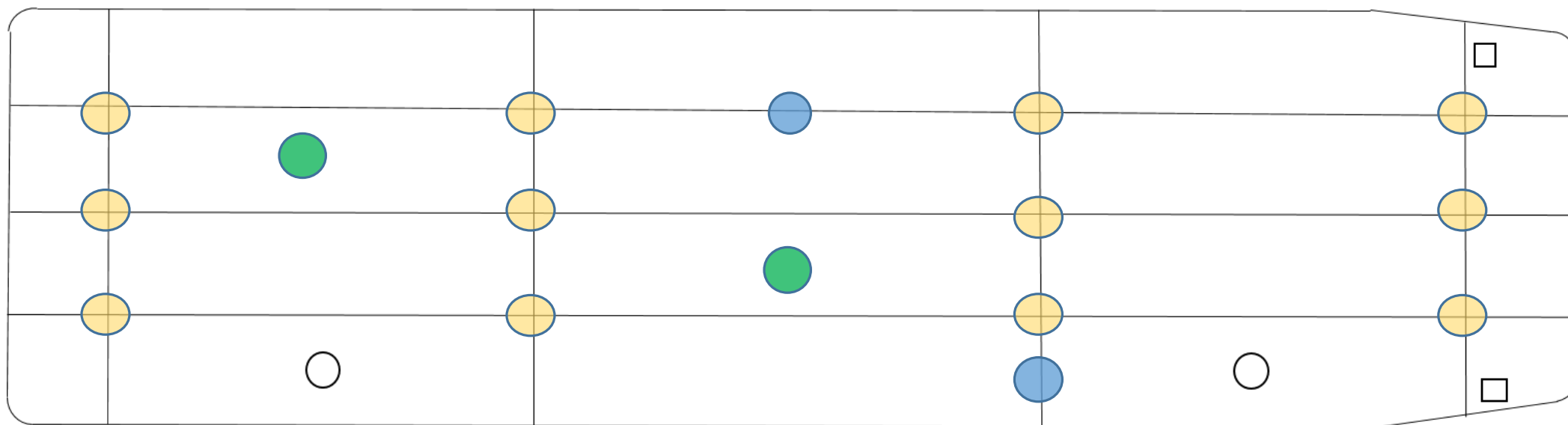
2 spud trunks at port side forward & aft, (with flush covers)  
2 spuds, diameter 700 mm, length: 18,00 m  
4 Ro Ro ramps: L: 12,00 m, B: 4 x 1,5 m = 6 m  
In total 58 lashing eyes, SWL 49 tons



[chartering@ffs-as.com](mailto:chartering@ffs-as.com) +47 38 39 12 29



10 T per m2 evenly distributed cargo



● 200 t point loads on bulkhead crossing ● 80 t on bulkhead ● 70 t on webframes